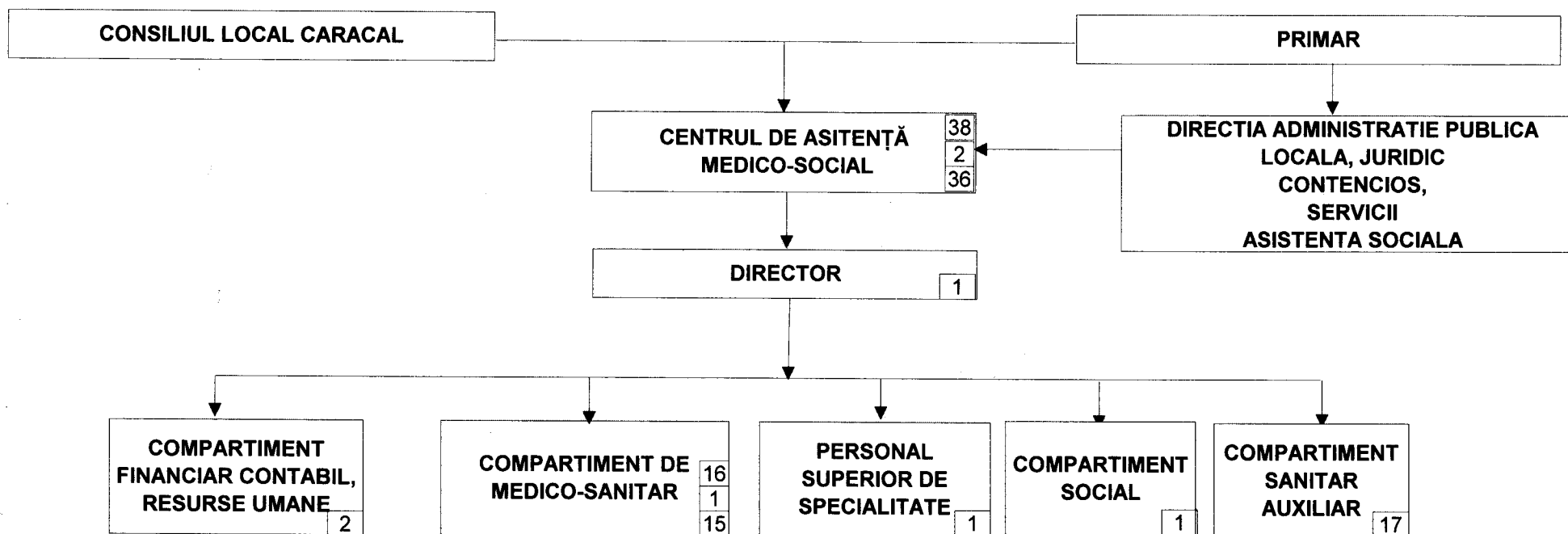


CONSILIUL LOCAL CARACAL  
Nr.posturi=38 din care  
de conducere=2  
de execuție=36

Anexa nr.1 la HCL nr. 24/31.04  
2012

## ORGANIGRAMĂ pentru Centrul de Asistență medico-social pe anul 2012



Primar,  
Eduard Claudiu CIOCĂZANU

Director resurse Umane,  
Aura IONESCU

CONSILIUL LOCAL AL MUNICIPIULUI CARACAL

ANEXA II

LAHCL NR. 24/31.07.2012.

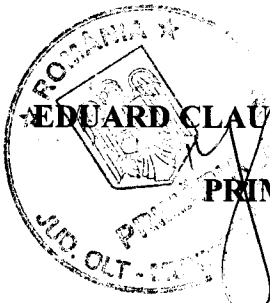
STAT DE FUNCTII

Nr ctr	STRUCTURA	Funcția contractuală		Treapta profesională	Nivelul studiilor
		De conducere	De executie		
.	<b>CENTRUL DE ASISTENTA MEDICO SOCIALA CARACAL capitol bugetar 66 Sanatate</b>				
1		Director medic			S
	<b>COMPARTIMENT MEDICO- SANITAR</b>				
2			Medic		S
3		Asistent sef			PL
4			Asistent medical principal		PL
5			Asistent medical principal		PL
6			Asistent medical principal		PL
7			Asistent medical principal		PL
8			Asistent medical principal		PL
9			Asistent medical principal		PL
10			Asistent medical principal		PL
11			Asistent medical principal		PL
12			Asistent medical principal		PL
13			Asistent medical principal		PL
14			Asistent medical principal		PL
15			Asistent medical		PL
16			Asistent medical		PL
17			Asistent medical		PL
	<b>COMPARTIMENTUL FINANCIAR CONTABIL, RESURSE UMANE</b>				
18			Inspector de specialitate	I	S
19			Inspector de specialitate	II	S
	<b>COMPARTIMENT SUPERIOR DE SPECIALITATE</b>				
20			Psiholog		S
21			Asistent social principal		S
	<b>COMPARTIMENT SANITAR AUXILIAR</b>				

22			Infirmiera		G
23			Infirmiera		G
24			Infirmiera		G
25			Infirmiera		G
26			Infirmiera		G
27			Infirmiera		G
28			Infirmiera		G
29			Infirmiera		G
30			Infirmiera		G
31			Infirmiera		G
32			Infirmiera		G
33			Infirmiera		G
34			Infirmiera		G
35			Infirmiera		G
36			Infirmiera		G
37			Infirmiera		G
38			Infirmiera		G

<b>NR. TOTAL FUNCTII CONTRACTUALE DE CONDUCERE</b>	<b>2</b>
<b>NR. TOTAL FUNCTII CONTRACTUALE DE EXECUTIE</b>	<b>36</b>

<b>NR TOTAL FUNCTII IN INSTITUTIE</b>	<b>38</b>
---------------------------------------	-----------


**EDUARD CLAUDIU CIOCĂZANU**  
**PRIMAR**

**IONESCU AURA**  
**DIRECTOR EXECUTIV R.U.**